

THE ORIGINAL OF THE DOCUMENT  
RECORDED AS FOLLOWS  
STATE OF HAWAII

BUREAU OF CONVEYANCES

DATE 7/11/90 TIME 10:39 a.m.  
DOCUMENT NO 90-104733

LAND COURT SYSTEM

REGULAR SYSTEM

Return by Mail ( ) Pickup (  ) To:

GOODSILL ANDERSON QUINN & STIFEL (LY)  
130 Merchant St., Suite 1600  
Honolulu, Hawaii 96813

CORRECTION TO DECLARATION OF  
PROTECTIVE COVENANTS, CONDITIONS AND  
RESTRICTIONS FOR KAILIHWAI RIDGE

THIS CORRECTION DOCUMENT is made this 5th day  
of July, 19 90, but effective October 3, 1988,  
by C. BREWER PROPERTIES, INC., a Hawaii corporation, whose  
principal place of business is 827 Fort Street, Honolulu  
96813, and whose post office address is P. O. Box 1826,  
Honolulu, Hawaii 96805, hereinafter referred to as the  
"Declarant",

W I T N E S S E T H :

WHEREAS, Declarant executed and recorded that  
certain Declaration of Protective Covenants, Conditions and  
Restrictions for Kailihwai Ridge dated October 3, 1988,  
recorded in the Bureau of Conveyances of the State of  
Hawaii in Liber 22452 at Page 429 (the "Declaration"); and

WHEREAS, the Declaration makes reference to an  
Exhibit B attached thereto and made a part thereof, which  
Exhibit B includes, without limitation, a map showing  
approximately 3,000 acres of additional land located on the

Island of Kauai in the vicinity of the Real Property (as defined in the Declaration), which may be annexed by the Declarant to the property covered by the Declaration; and

WHEREAS, page 2 of said Exhibit B was inadvertently omitted from the Declaration, and Declarant desires to rectify said omission;

NOW, THEREFORE, Declarant hereby declares as follows:

1. Exhibit B attached hereto and made a part hereof, consisting of the second of two pages of Exhibit B to the Declaration, is hereby added to and made a part of the Declaration, and said Exhibit B to the Declaration, as reference is made therein, is deemed to consist of two pages, the first of which is attached to the original Declaration, and the second of which is attached as Exhibit B hereto.

2. This Correction Document shall be effective as of October 3, 1988, and except as provided herein, the Declaration is hereby ratified and confirmed and shall remain in full force and effect.

IN WITNESS WHEREOF, Declarant has executed this document as of the day and year first above written.

C. BREWER PROPERTIES, INC.

By B. J. Myrland  
Its Exec. Vice President

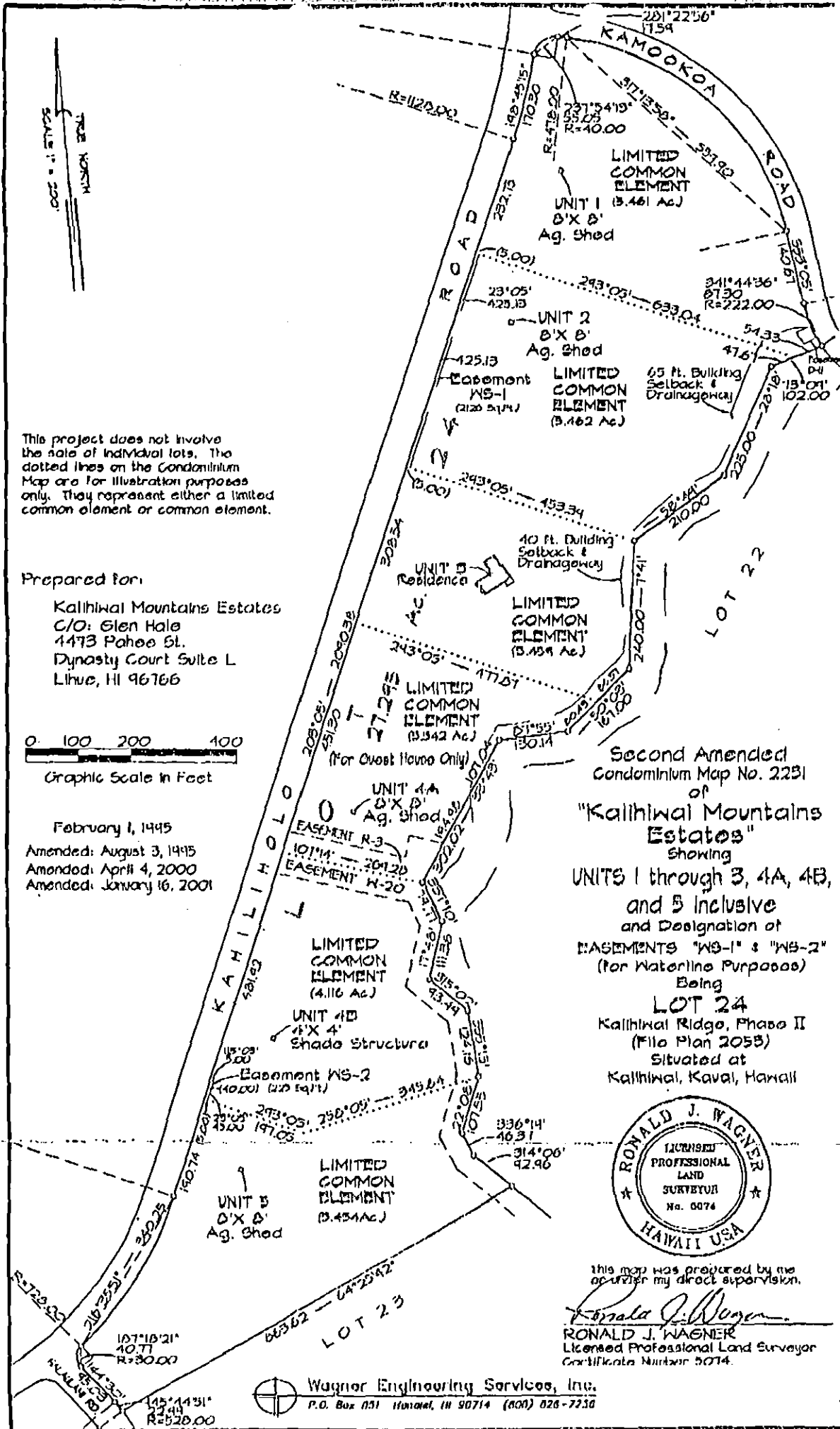
By G. J. Kahanawale  
Its Vice-President

STATE OF HAWAII )  
 ) ss.  
CITY AND COUNTY OF HONOLULU )

On this 5th day of July, 1990,  
before me appeared B. G. Moynahan and  
A. I. Nakahodo, to me personally known,  
who, being by me duly sworn, did say that they are  
Executive Vice President and Vice President,  
respectively, of C. BREWER PROPERTIES, INC., a Hawaii  
corporation; that the seal affixed to the foregoing  
instrument is the corporate seal of said corporation; that  
said instrument was signed and sealed in behalf of said  
corporation by authority of its Board of Directors; and  
said officers acknowledged the instrument to be the free  
act and deed of said corporation.

*Harold J. Francis*  
Notary Public  
State of Hawaii

My commission expires: AUG 18, 1992



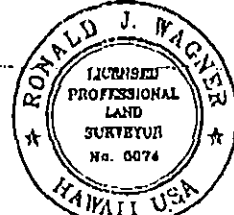
This project does not involve the sale of individual lots. The dotted lines on the Condominium Map are for illustration purposes only. They represent either a limited common element or common element.

Prepared for:  
 Kalihwai Mountains Estates  
 C/O: Glen Hale  
 4473 Pahoe St.  
 Dynasty Court Suite L  
 Lihue, HI 96766

0 100 200 400  
 Graphic Scale in Feet

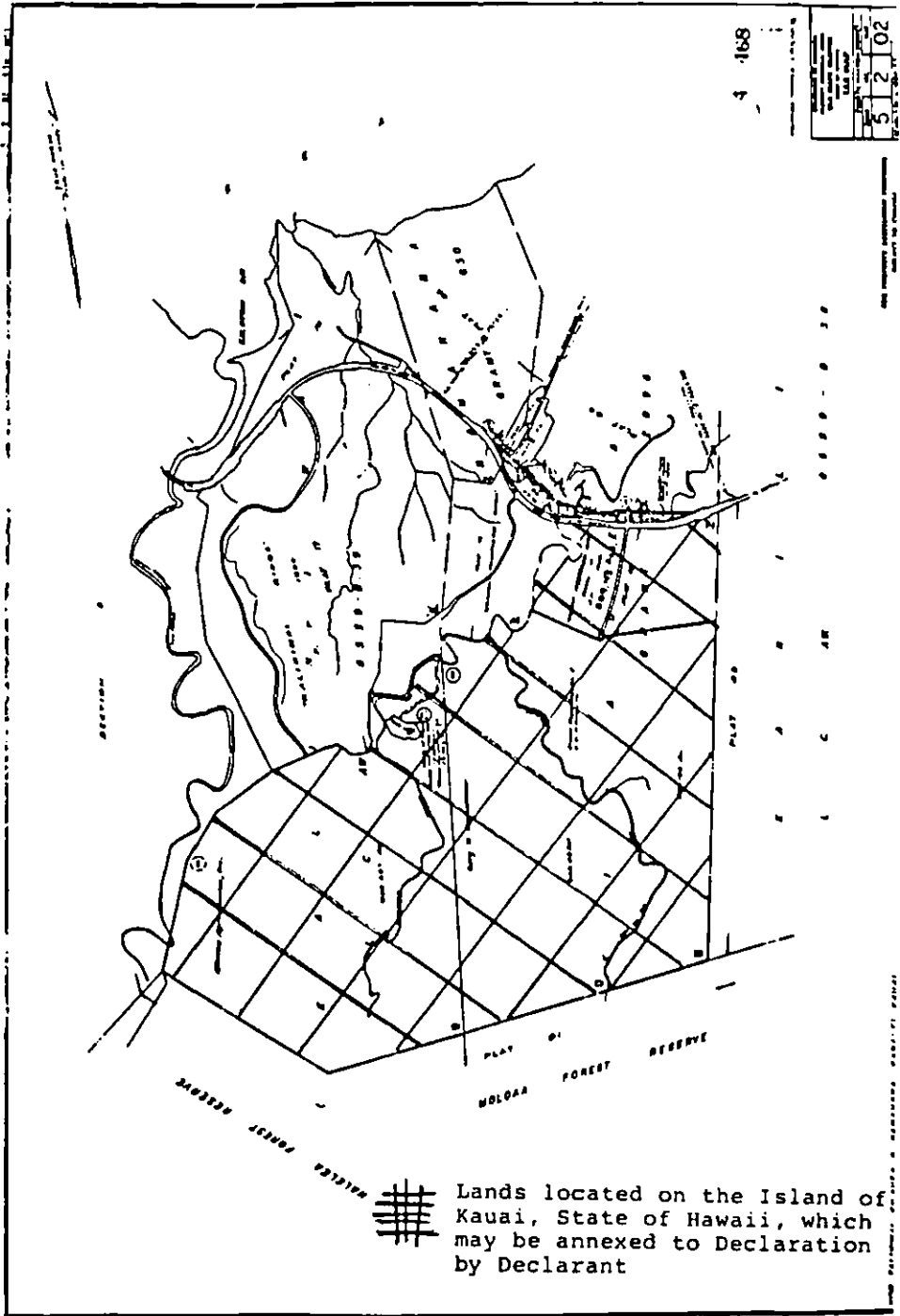
February 1, 1995  
 Amended: August 3, 1995  
 Amended: April 4, 2000  
 Amended: January 16, 2001

Second Amended  
 Condominium Map No. 2231  
 of  
 "Kalihwai Mountains  
 Estates"  
 Showing  
 UNITS 1 through 3, 4A, 4B,  
 and 5 inclusive  
 and Designation of  
 EASEMENTS "NS-1" & "NS-2"  
 (for Waterline Purposes)  
 Being  
 LOT 24  
 Kalihwai Ridge, Phase II  
 (File Plan 2053)  
 Situated at  
 Kalihwai, Kawai, Hawaii



this map was prepared by me  
 or under my direct supervision.  
 Ronald J. Wagner  
 RONALD J. WAGNER  
 Licensed Professional Land Surveyor  
 Certificate Number 6074

Wagner Engineering Services, Inc.  
 P.O. Box 851 Honolulu, HI 90714 (808) 626-7238



**EXHIBIT B**  
 (Page 2 of 2 Pages of Exhibit B  
 attached to Declaration of  
 Covenants, Conditions and  
 Restrictions for Kalihiwai Ridge)